

ZEMS PLUGINS

ATTENDANCE MANAGEMENT:

Attendance through Smart card & Biometric

WEB COLLABORATION

Integration of ZEMS with Institute Website

SMS ALERTS

SMS alerts through ZEMS to parents, students etc.

VEHICLE TRACKING SYSTEM

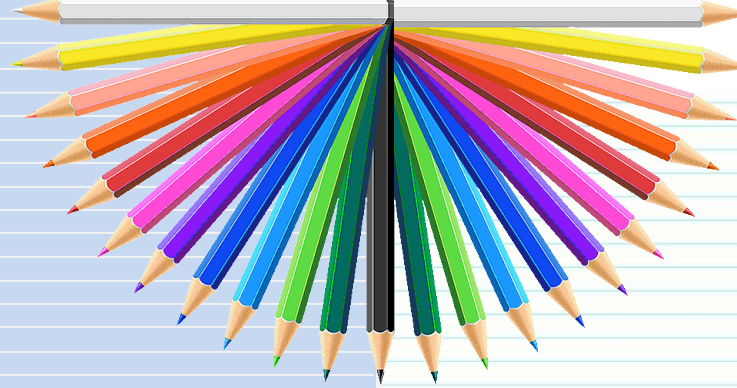
Real time tracking for Institute vehicle

RFID SYSTEM

RFID System for Library Automation & Security

IP / CCTV SURVIELANCE

Single Window real time monitoring



Zillion Technology Services

F 21, Ansa Industrial Estate, Saki-Vihar Road,
Sakinaka, Andheri(East), Mumbai - 400 072, India
Tel : +91-22-40430240 Fax : +91-022-28475207
E-mail: sales@zilliontechnology.com
URL: www.zilliontechnology.com



ZEMS Flavors



Attendance Management
Bio Matric
Smart Card



IP-CCTV Surveillance



Web Collaboration

ZEMS



Library RFID Management System



Vehicle Tracking System



SMS Alerts



ZEMS PLUGINS

Zillion's Educational Institute
Management Solution



www.zilliontechnology.com

Introduction

In recent times, advanced technology is extensively being used to revolutionize educational campus management by streamlining administration-related processes. ZEMS (Zillion's Educational Institute Management Solution) is a next generation solution, precision engineered to enhance the administrative efficacy of educational institutions. ZEMS is a scalable software solution software build with 3 Tier Modular architecture with both Online and Offline functionalities. ZEMS brings the education stakeholders (management, administration, parents, teachers and students) together on a common interactive platform thereby fostering camaraderie among them and building a solid school community



ZEMS S is designed to automate a school specific diverse operations from classes, exams to school events calendar. Further, the various modules of

the ZEMS S have been devised not only to facilitate each and every set of school activities but also to inculcate sound practices and standards of performing those activities in the personnel responsible thereof.

Further the solution has the capability of managing changing guidelines by the board (IB / CBSE / ICSE / SSC) the school is affiliated with. Following are the different modules of ZEMS S:

ZEMS MODULES

Admission Management

This module is designed and implemented to assist the admissions office for managing the whole admission process.

Student Information

It manages the complete information about the students.

Course Management

School can configure different courses offered by it with subject details in this module

Fee Management

System facilitates the fee deposit with fee receipt, gives information and reminders on non-receipt / overdue of fees, advance fee deposits and more.

Timetable Management

This module captures all parameters used in creating a college timetable and automatically creates one with its timetable generation tool.

Examination Management

It manages creation of Exam schedule, hall tickets, staff & room allocation, Calculation & Mark sheet generations etc.

Library Management

This module also automates all the activities in a library including membership, storage, member details, list of available books, issues, returns, and other information associated with the library.

Attendance Management

The attendance management module effortlessly tracks institute attendance data of students and the staff

Staff Management

This module manages the information about the teaching & non-teaching staff with the entire required / related documents.

Payroll Management

The salary calculation & payment of teaching/non-teaching staff can be done by this system

Financial Accounting

It manages the complete financial accounting of the school including general ledger, trail balance, cash flow, payable/receivable, profit & loss, trial balance statement etc.

ZEMS HIGHLIGHTS

- ZEMS is a multiuser system which allows administrator to assign access privileges to different users. System supports modular as well as transaction level privileges.
- ZEMS provides comprehensive MIS (reports) at different level of hierarchy. Multiple tabular & graphical reports provides holistic view to the management of the institute.

ZEMS ADVANTAGE

- Technological Advantage (.Net, MS SQL)
- Browser based application, can be deployed on Intranet or Internet
- User friendly easy interface
- Integrated Comprehensive Solution with Modular Approach: Plug & Play
- Quick & Easy Implementation
- Customizable to meet the specific need of user
- Multi level of security at modular & functional level

IMPLEMENTATION & SUPPORT

- A dedicated customer support group for installation, training & after sales support
- Technical assistance in migration from legacy system
- A centralized online customer care model for clients to login their queries and get fast solutions.

TECHNICAL VERSIONS OF ZEMS

- **ZEMS STANDARD**
For Single School or College Management
 - **ZEMS ENTERPRISE**
For multiple Schools or Multiple Colleges under one Institution
 - **ZEMS PREMIA**
For multiple mix of Schools and Colleges under one Institution
- The above mentioned versions can be deployed on INTRANET or on INTERNET